

BG INC. specializes in mechanical repair of high-performance turbomachinery.

- Manufacture and Repair Babbitted bearings, Sleeve bearings, Brush seals, Abradable seals and Labyrinth seals.
- Repairs and Rebuilds Compressors, Cryogenic & Steam Turbines, Pumps and Rotor repair and balancing.
- Polymer manufacturing department.

Our air-conditioned facility boasts 30,000 square feet dedicated to overhauls and manufacturing, with lifting capabilities ranging from 20 tons indoors and 50 tons mobile outdoors. Our 7500 square foot office features the latest technology and inventory systems.

The BG repair facility is strategically located with close proximity to both Houston airports and Port of Houston. This allows fast and efficient shipping for domestic and international orders.

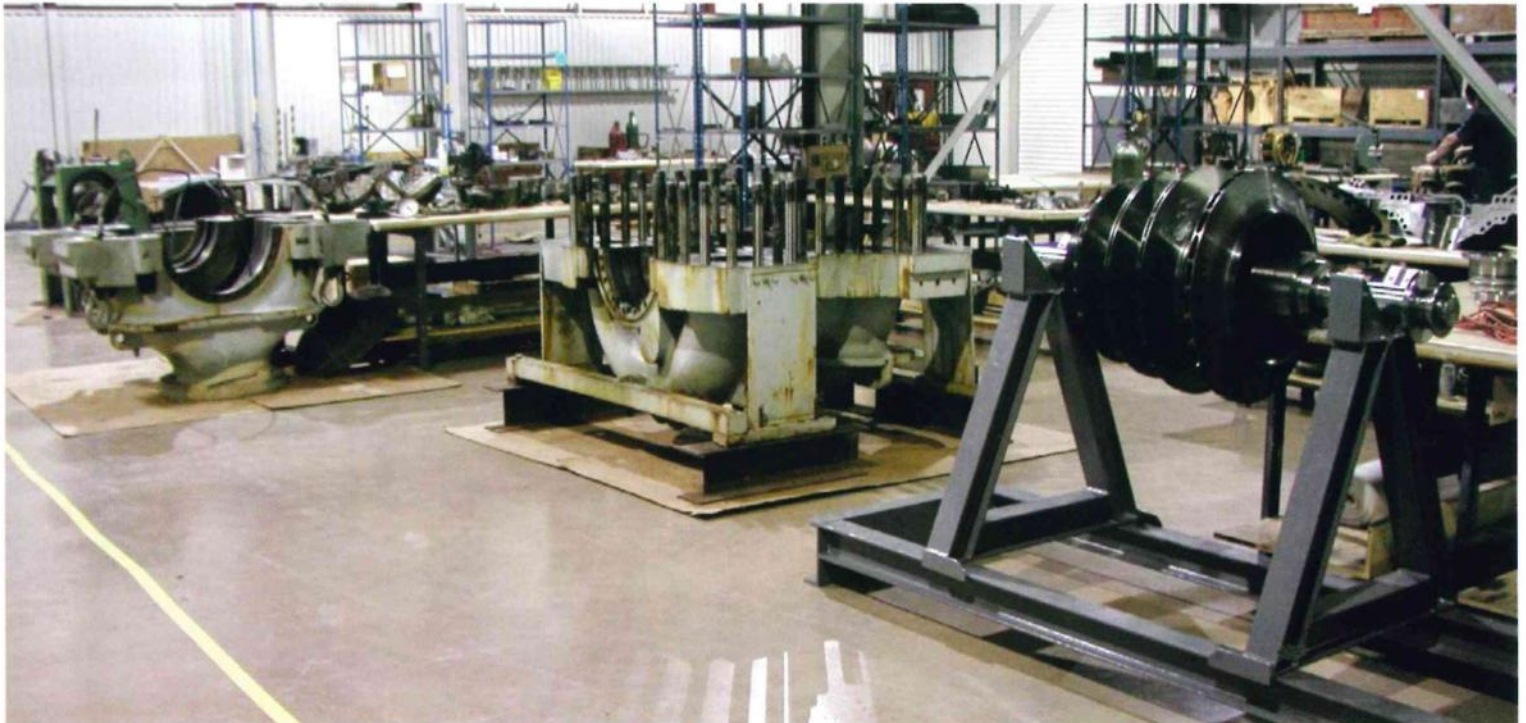
- Haas CNC Lathe, ST-20 2018 Polymer Department
- Haas CNC Lathe, ST-20 2018 Polymer Department
- Haas CNC Lathe, ST-30 2019 Polymer Department
- Haas CNC Lathe ST-30 with 21" swing 2017
- Haas CNC Mill VF-6/50, X-64", Y-32", Z-30" 2009
- (GibbsCam, 3D SolidSurfacer Milling with ACIS Reader for Inventor)
- Weiler CNC Lathe E50HD with 17" swing 2020
- 6 Engine lathes to 34" swing with 7' centers 2014 to 1999
- 3 Bridgeport vertical milling machines (over 10 years), 2 with conversational NC controls
- King VTL 54" table with side cutting head

Horizontal boring mill 3.5" spindle, 5' x 5' rotary table and outboard steady rest

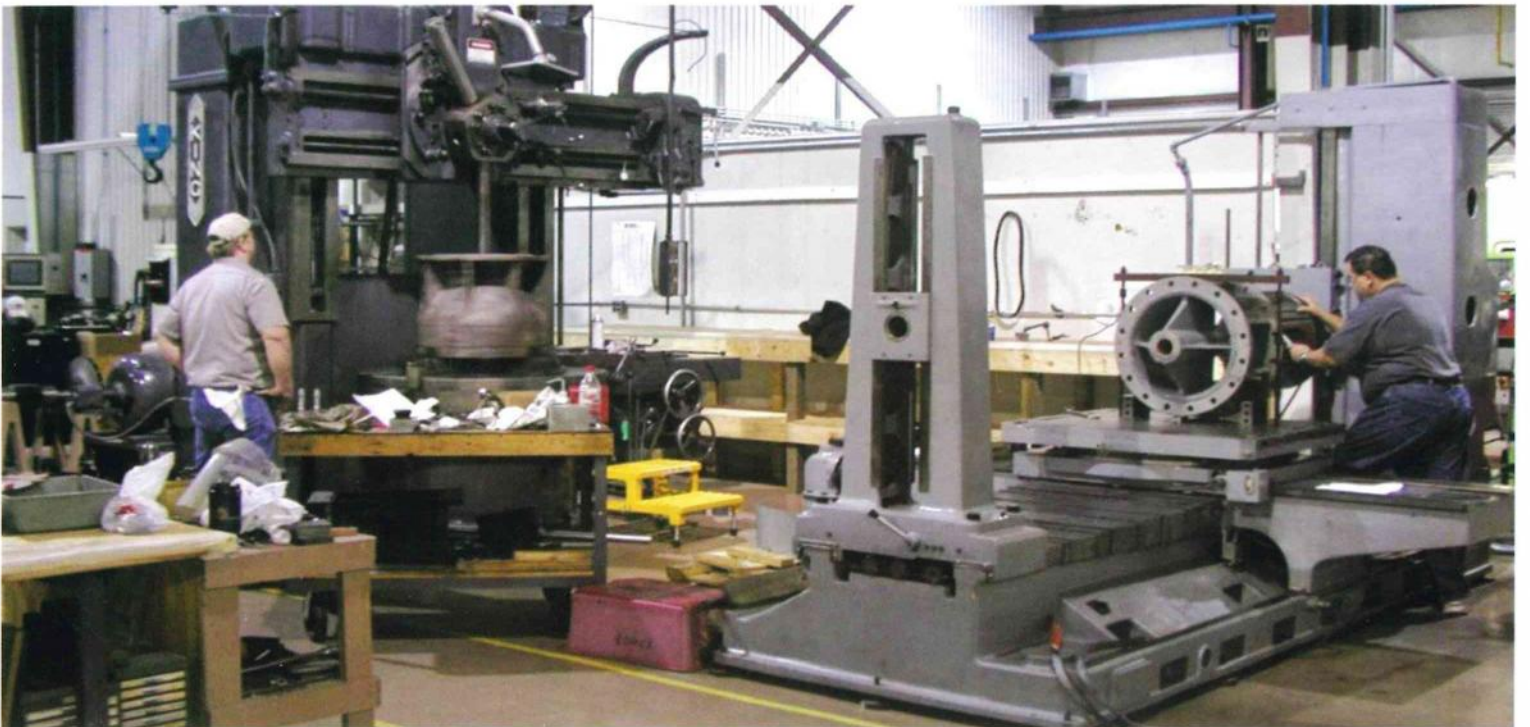
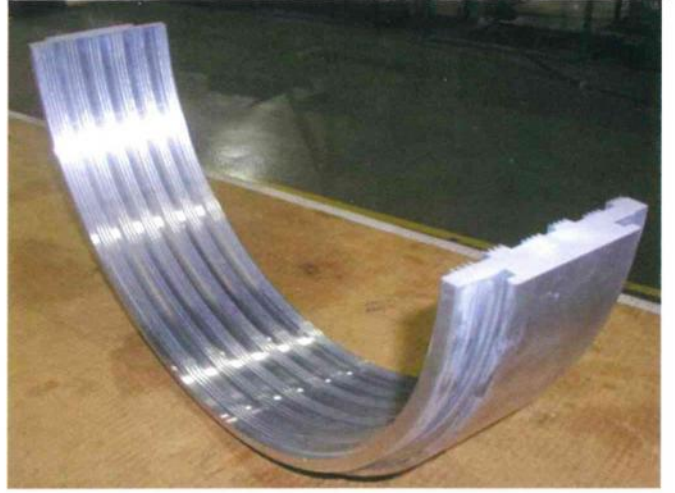
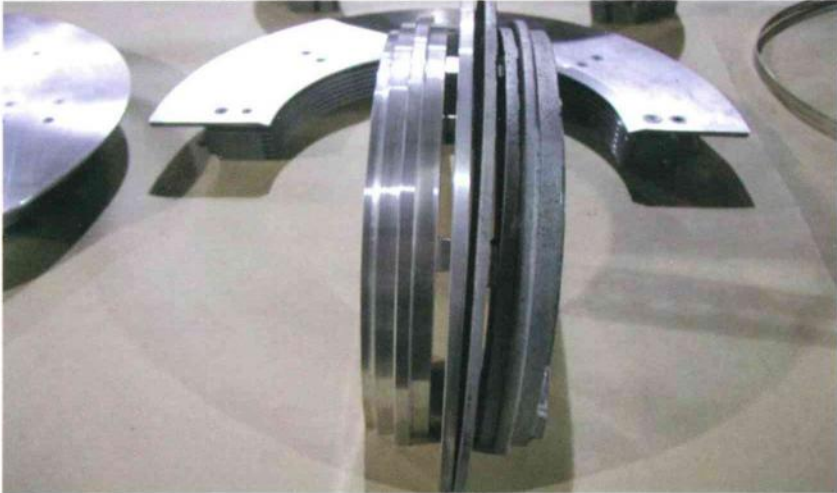
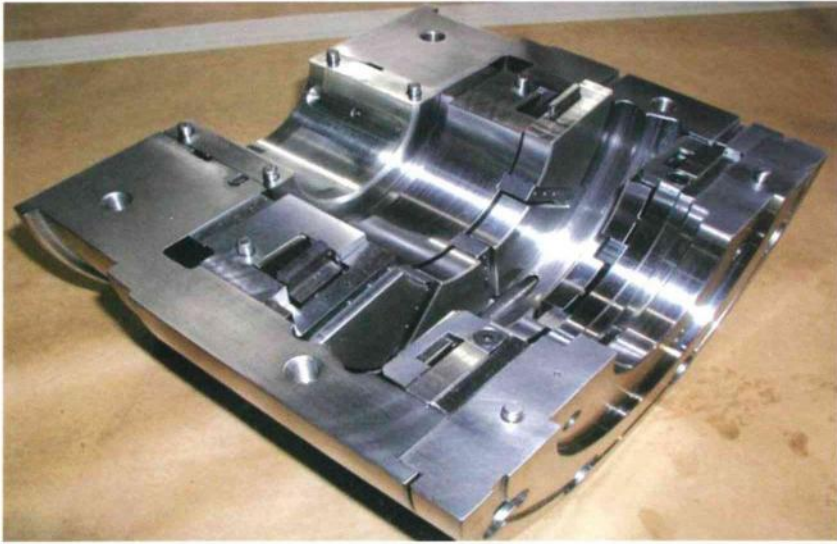
- Horizontal boring mill 4.5" spindle, 4' x 10' table and outboard steady rest
- Gallmeyer & Livingston 12" x 30" surface grinder 2004
- Our overhead lifting capacity in the shop is 30 tons.
- We have 55-ton yard crane capacity.
- Spitfire 24" lapping machine
- Lodge & Shipley T Lathe with 60" turning capacity.
- Schenck 250 lb. balancing machine (2) 2020, 1988
- Schenck 5000 lb. balancing machine 1987
- Schenck 20,000 lb. balancing machine 1966
- Industry certified O

<sup>2</sup>  
cleaning facility

- Centrifugal Babbitt spinner 2020
- Blasting (Sand & Bead) 2010 9' wd. x 11' ht. x 21'lg.
- Paint Room 2010 Same as above
- Certified UT inspection 2014
- Hexagon Laser and touch scanning for duplicating parts 2019
- AutoCAD generated drawings of all manufactured and/or repaired components.



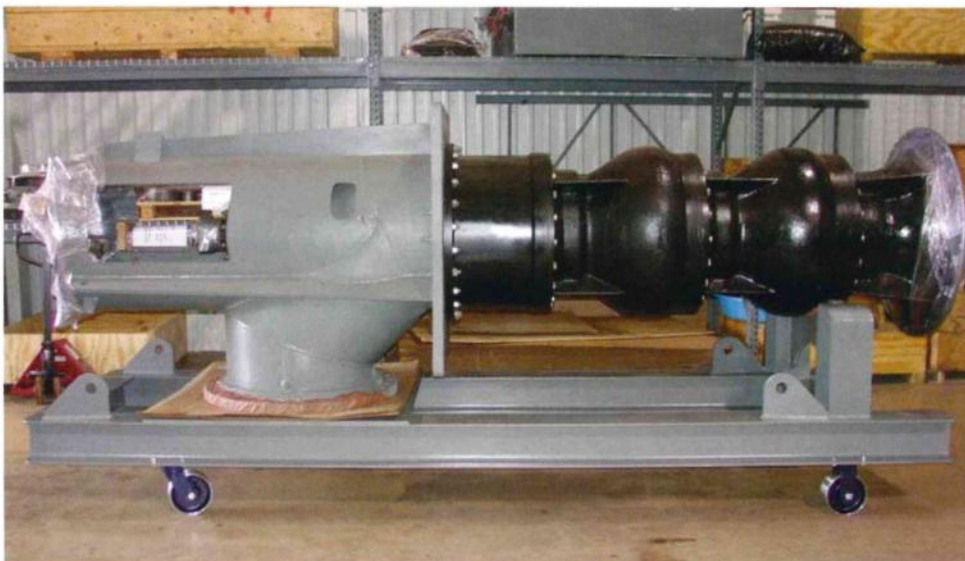
# Turbomachinery Repair Precision Bearings & Seals

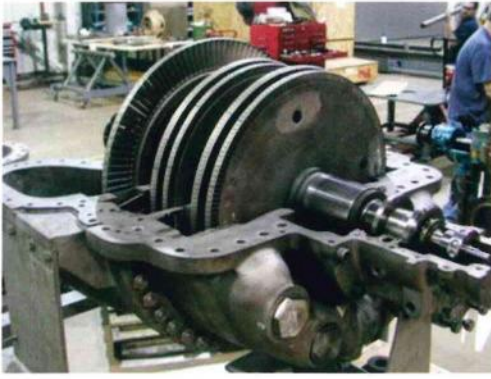


# REPAIR DEPARTMENT

★ All repairs consist of receiving the equipment, taking digital photographs of the as received condition, pre-cleaning prior to entering the shop, disassembly, recording all critical measurements, non-destructive testing of all critical parts, and developing a work scope.

★ All reusable parts are cleaned either by sand blasting, glass beading, pressure washing or hand cleaning. Hydro testing the case is provided if major weld repairs are necessary. If applicable, the case is painted inside and out with paint conducive to the environment the equipment operates in.





★ Parts are replaced as required, either manufactured by B G) Assembly, or those from the customer's stock. The rotating parts are balanced to well below API specifications or a finite residual unbalance for high speed rotors and the unit is final assembled.

★ Steam Turbines

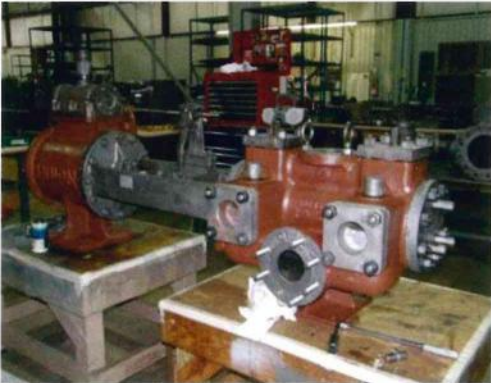
★ Multi-Stage Pumps

★ Centrifugal Compressors

★ Vertical Pumps

★ Cryogenic Expanders

★ Gearboxes



# BEARINGS & SEALS

★ We Assembly has full manufacturing and repair capabilities for all types of fluid film bearings from the most basic sleeve bearing to the most modern tilt pad bearing.

We also manufacture all types of labyrinth seals; steam, oil, air and gas applications. We can also design and retrofit brush seals for steam and air service. Our products are in use in compressors, turbines (both steam and gas), expanders, pumps, motors and gearboxes.



★ Tilting Pad Bearings

★ Sleeve Bearings

★ Brush Seals

★ Abradable Seals

★ Labyrinth Seals

★ Welding and Babbiting Services

